

# Beyond the Surface.

FEATURE

Emily Sper

When I look around, I see colors and patterns. I'll stop to gaze at light reflecting off a window. Or it might be crows silhouetted against an evening sky. Sometimes bizarre juxtapositions make me laugh out loud.

Ordinary objects take on a new dimension when you take the time to really look around. For me, the side of a car or a wall become landscapes; the black and white dots of a metal bench play a game. A walk down the street is always a new experience, no matter how many times I've walked down the same street before.

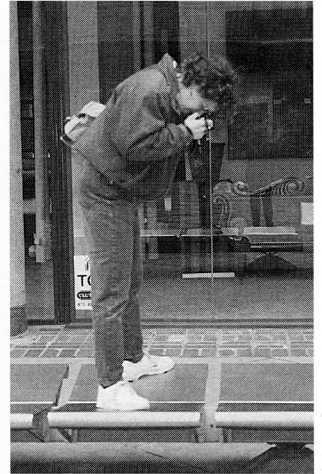
Growing up in a wooded area instilled in me an appreciation and love of nature. If I don't find nature in my environment, I create it in whatever medium I'm working in.

When I photograph, I begin with a subject that is usually seen as harsh, whether it is the side of a car or a concrete wall. These are man-made products that have been brought into the environment by industry. Instead of showing the contrast between nature and industry, I have chosen to turn our synthetic landscape into a softer, more visceral one. My images invite the viewer to enter and explore the space within by creating the illusion of depth and movement.

And, at times, I concentrate on the interaction of real and abstract imagery, the play between nature and man-made materials. Instead of escaping from the world of metal, glass, and cement into total abstraction, I keep some hints of that world.

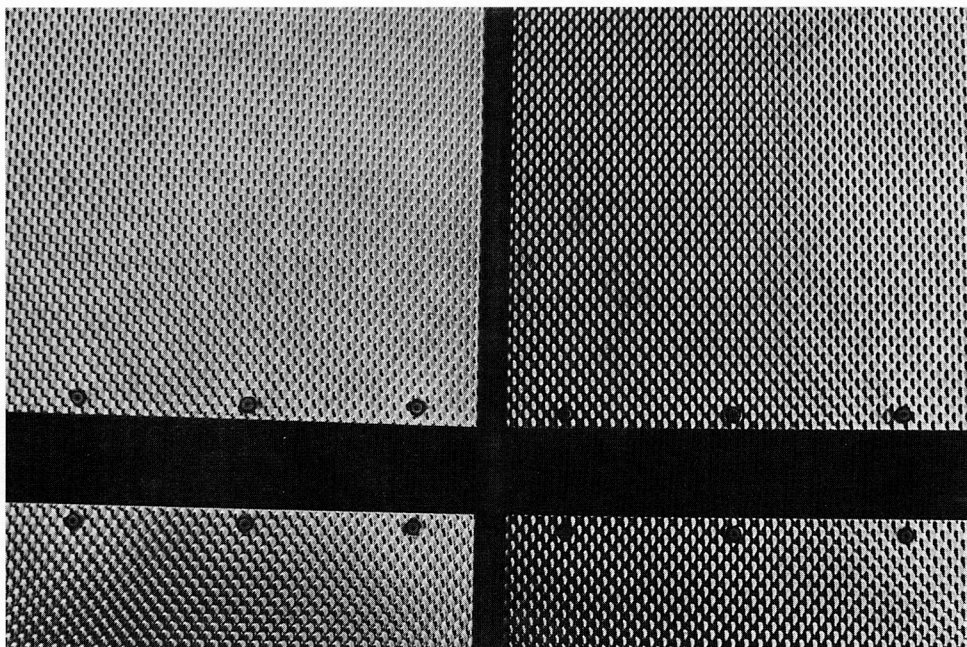
Thinking of photography as two-dimensional dance, I choreograph the different elements within the camera's frame and paint with color and light. For me, a successful photograph or drawing makes visual music. In my opinion, all the arts are interrelated. You may feel the influence of painting, sculpture, dance, music, and poetry in my artwork.

I hope that my photographs will evoke a mood or feeling. Each viewer will see something personal and different. I encourage you to use your imagination.



© Jane Sper

Emily Sper photographing a metal bench in London.



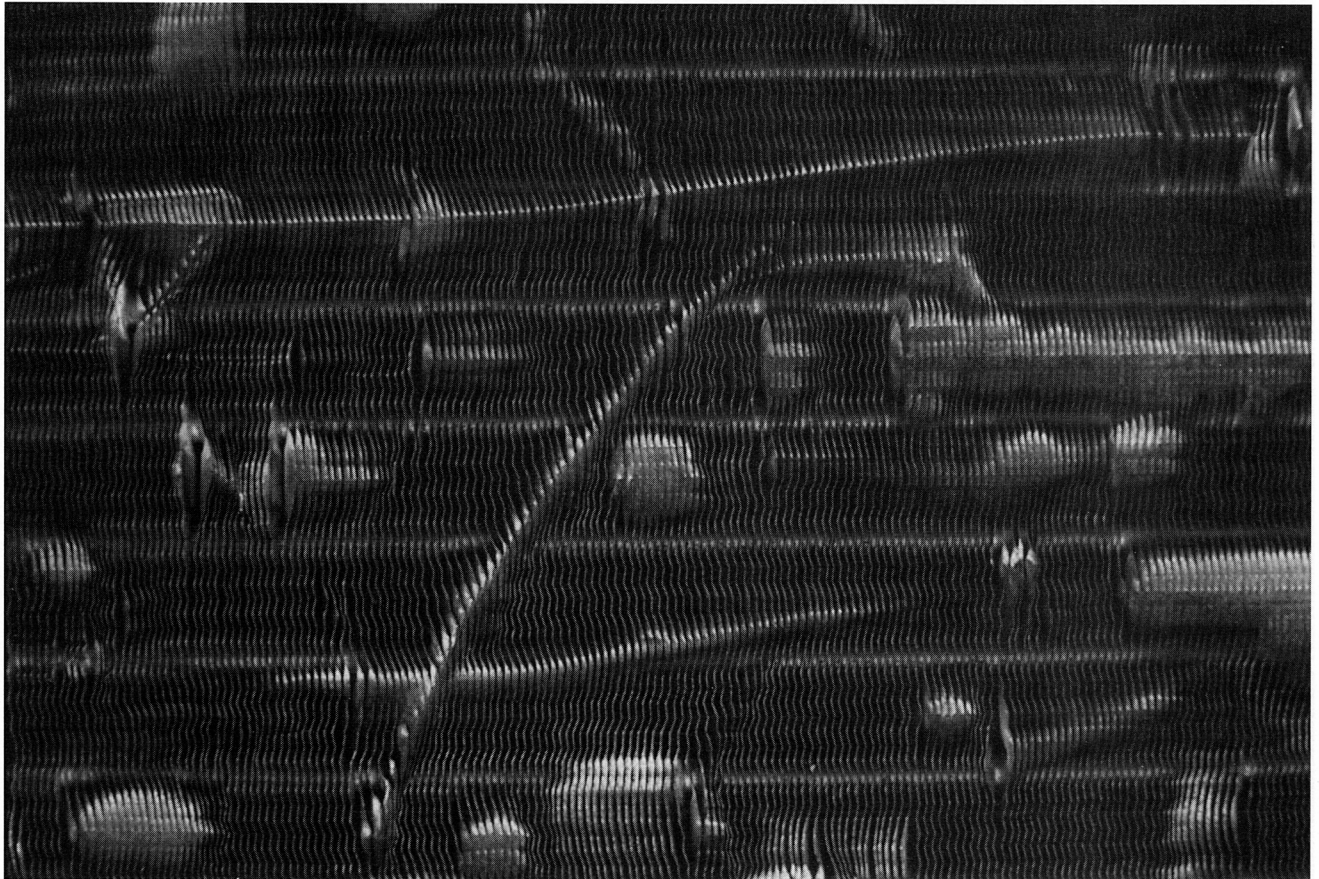
Bench



© 2001 by Emily Sper.



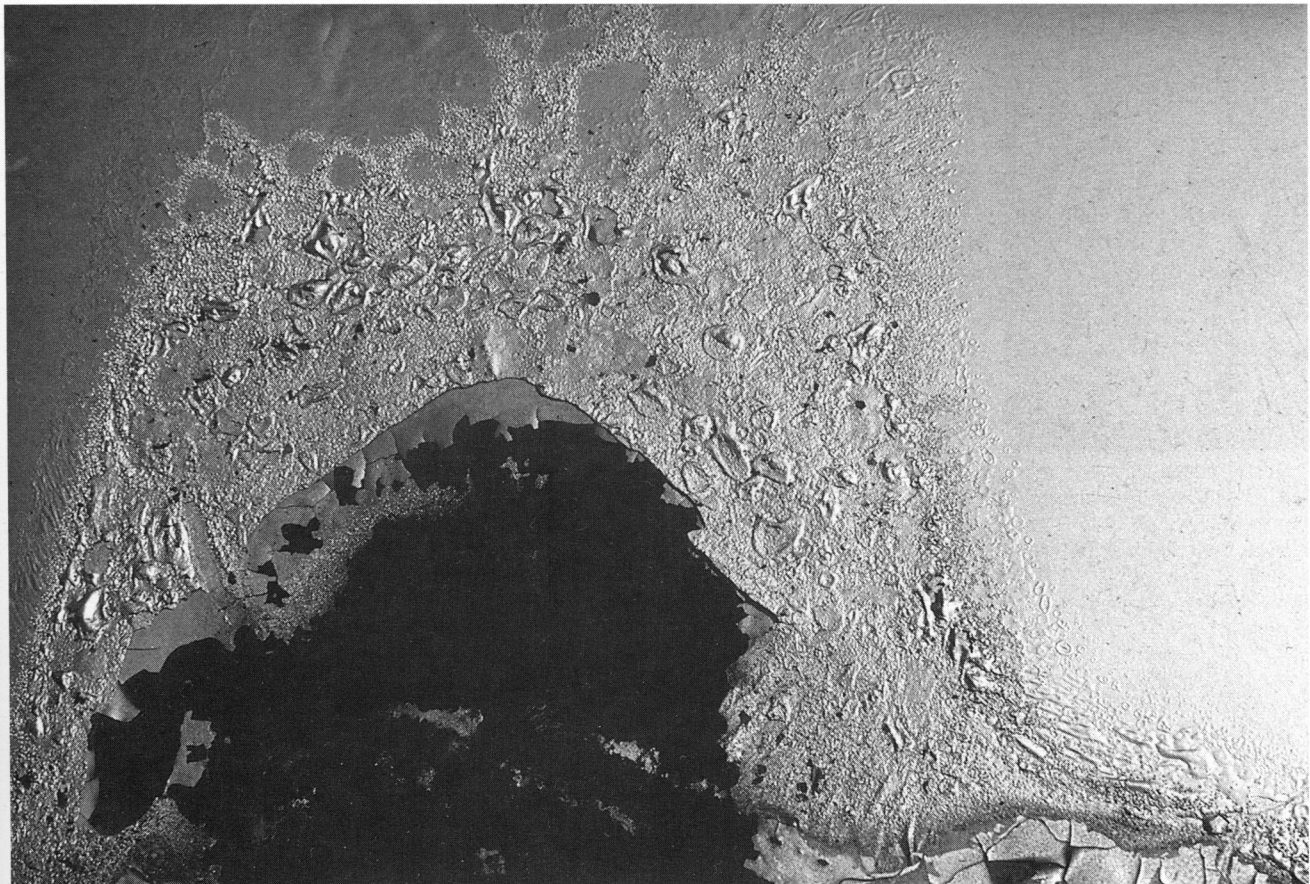
Wall



Radiator



Water on Glass



Car II